

—  
BLOQ

creative  
carpet tiles



THE BINARY  
RENEGADE

BLOQ

creative  
carpet tiles



© Rijksmuseum, Genemuiden



© Het Rijksmuseum, Frans Hals

### Nice to know

The colour ochre in the BLOQ logo refers to the rushes and the colour palette of the Golden Age in Holland.

## Our story

Being part of Betap, BLOQ can build on more than **100 years of experience** in the flooring sector. Betap grew from a local manufacturer of rush mats in 1918 to an internationally renowned carpet manufacturer.

Working with some of the most reputable architects, designers and commercial carpet partners, Betap's **high-traffic commercial carpet** is used across the world in prestigious office buildings, hotels, universities, museums and various leisure applications. Betap is your partner of choice for commercial carpet.



## High-end production line

Group Betap is an **innovative carpet manufacturer** in Genemuiden (The Netherlands) with a vertically integrated production line for tufted and non-woven floor coverings, as well as an own yarn production line.

With BLOQ, we are developing and producing **creative carpet tiles** that comply with the stringent regulations for the commercial market. We offer high-performance tiles focused on office projects, that are sound absorbing and have the best results in fire safety. Our products are also produced following the strictest standards in sustainability.



# The Binary

RENEGADE is part of The Binary collection, a design collection group existing of **five contemporary patterns**, built from a light and dark colour (binary). Living and working environments have never been so close.

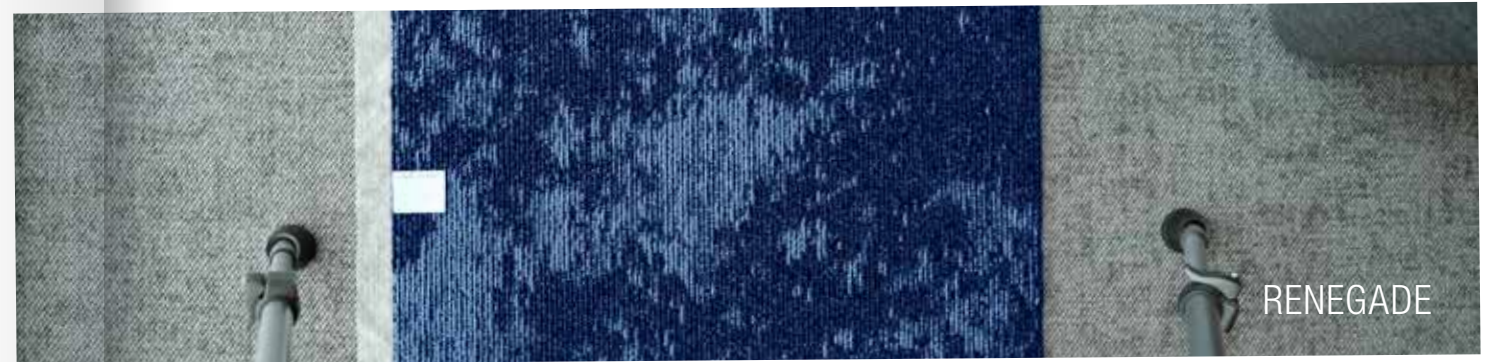
Meet The Binary family: FLOW, BALANCE, RENEGADE, SCULPTURE and GRAIN. The Binary collections match perfectly with our The Workplace collection, which uses the same colours.



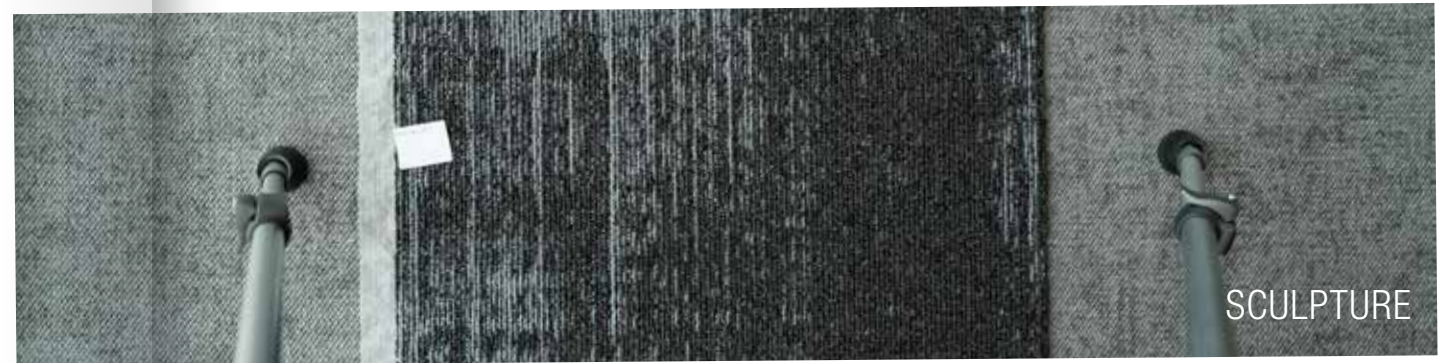
FLOW



BALANCE



RENEGADE



SCULPTURE



GRAIN

*Renegade* →

*Mixing two yarns:  
a light & dark colour*

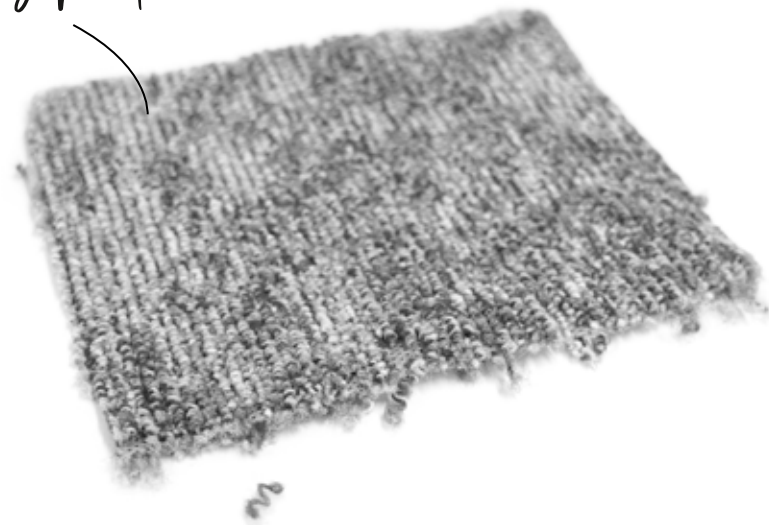


THE BINARY  
RENEGADE



Inspiration  
is everywhere

Cloudy pattern



## Two shades

RENEGADE is a tile of 50 x 50 cm. It has a **cloud-inspired design** with a dreamy mood. The pattern reveals clouds in **two shades**: always different, always in style, always unique. Choose your favourite design and walk on clouds.

Go for an airy feel.



RENEGADE 921

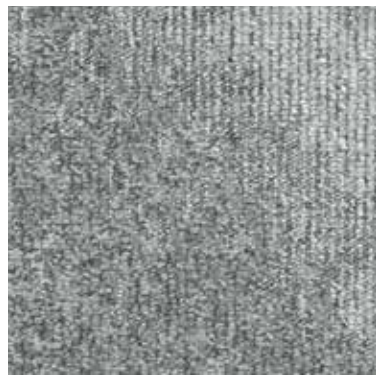


RENEGADE 921

# Colour range

RENEGADE comes in **18 matching colours**. Use the colours pure and go for one colour tone, or play with colours and mix according to your taste.

Tone on tone or bright and bold? RENEGADE has it all.



911 MOUSE



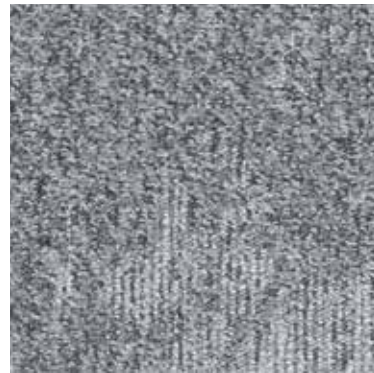
907 IRON



111 TRUFFLE



937 ASH



921 ELEPHANT



123 GREIGE



942 SHADOW



946 GRAPHITE



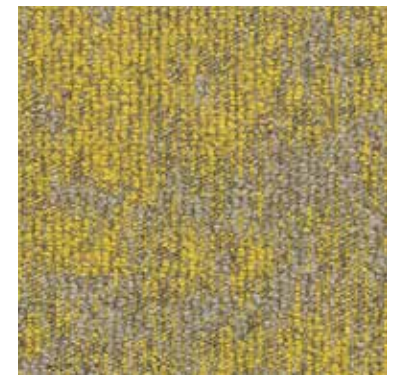
135 NUTMEG



130 SAHARA



218 PAPRIKA



125 FLAX



124 WALNUT



410 FUCHSIA



617 MOSS



812 COFFEE



522 ATLANTIC



530 SEA

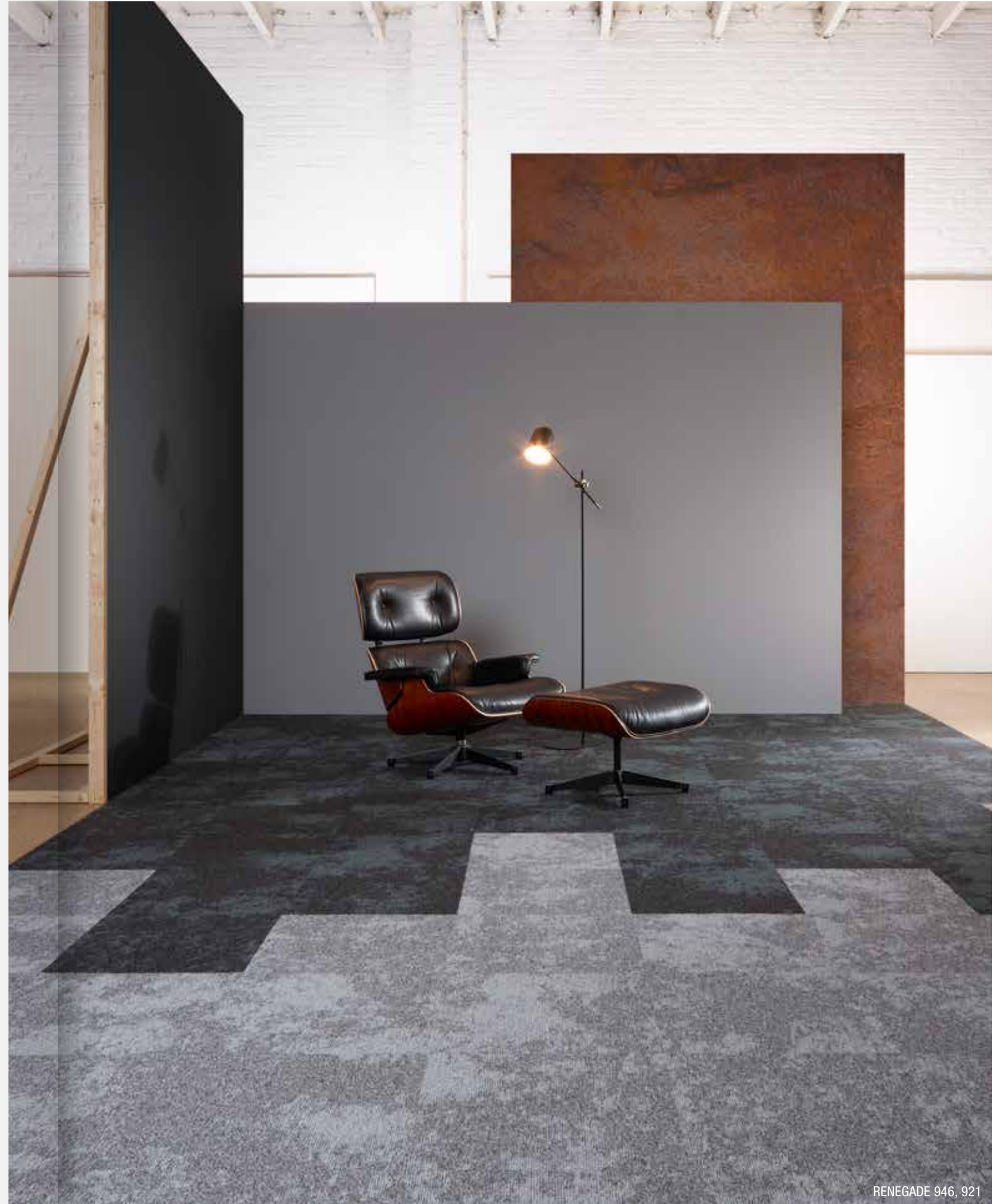




RENEGADE 946

## Pure or mixed

Use the colours pure in **one colour tone or dare to mix** with other tones. Soft hues stimulate a homely feeling at work, current colours meet today's trends.



RENEGADE 946, 921



RENEGADE 946, 921, 218



RENEGADE 946, 921, 218

# Highlights

## BITBACK

BLOQ uses **Bitback**, Modified Bitumen, which consists of 70% recycled content.

Tiles made with Bitback deliver great acoustic results such as **high sound absorption and insulation**, as well as **noise reduction**. Therefore carpets made with this sustainable backing contribute substantially to personal health and comfort.



**AQUAFIL**  
synthetic fibres and polymers

## SOLUTION DYED YARNS

BLOQ uses 100% Polyamide 6 Solution Dyed Nylon from **Aquafil**, the best and leading supplier for carpet manufacturers. Solution dyed means **better colour fastness** and the best results to light and water.

## LIGHT REFLECTANCE VALUES

**Light Reflectance Value (LRV)** is a scale that measures visible and usable light reflected from an illuminated surface. The percentage identifies how much light a colour reflects or absorbs. 0% reflects no visible light, 100% reflects all light.

COLOUR	LRV av	L
111	29.24	60.99
123	16.39	47.48
124	19.10	50.81
125	15.17	45.87
130	30.05	61.69
135	14.47	44.89
218	10.49	38.71
410	6.29	30.13
522	5.15	27.17

COLOUR	LRV av	L
530	10.15	38.11
617	7.42	32.75
812	10.81	39.26
907	21.24	52.99
911	22.83	54.90
921	20.07	51.91
937	12.00	41.21
942	8.92	35.82
946	5.00	26.73



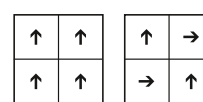
# THE BINARY RENEGADE

## SPECIFICATIONS

<b>TYPE OF MANUFACTURE</b>	Tufted Patterned Loop Pile 1/10"
ISO 2424	
<b>PILE FIBER COMPOSITION</b>	100% Polyamide 6
ISO 2424	Solution Dyed Nylon made by Aquafil
<b>SECONDARY BACKING</b>	Bitback, Modified Bitumen
ISO 2424	70% Recycled Content
<b>DIMENSION</b>	50 x 50 cm
EN ISO 24342	
<b>PILE WEIGHT</b>	650 g/m <sup>2</sup>
ISO 8543	
<b>SURFACE PILE WEIGHT</b>	380 g/m <sup>2</sup>
ISO 8543	
<b>TOTAL WEIGHT</b>	4 400 g/m <sup>2</sup>
ISO 8543	
<b>TOTAL THICKNESS</b>	6.9 mm
ISO 1765	
<b>PILE HEIGHT</b>	3.8 mm
ISO 1766	
<b>PILE DENSITY</b>	0.100 g/m <sup>3</sup>
ISO 8543	
<b>NUMBER OF TUFTS</b>	152 000 /m <sup>2</sup>
ISO 1763	
<b>DIMENSIONAL STABILITY</b>	≤ 0.2%
ISO 2551	
<b>NUMBER OF COLOURS</b>	18
<b>PACKAGING</b>	Box: 20 tiles / 5 m <sup>2</sup> Pallet: 200 m <sup>2</sup>

## PERFORMANCE

<b>CLASSIFICATION</b>	33
EN 1307	
<b>LUXURY RATING</b>	LC1
EN 1307	
<b>CASTOR CHAIR RATING</b>	A: Intensive use
EN 985	
<b>FIRE CLASSIFICATION</b>	B <sub>f1</sub> -s1
EN 13501-1	
<b>IMPACT SOUND INSULATION</b>	ΔL <sub>w</sub> : 26 dB
EN ISO 10140-3	
<b>SOUND ABSORPTION</b>	Frequency Hz 125 250 500 1000 2000 4000
EN ISO 354	α <sub>s</sub> 0.01 0.03 0.08 0.22 0.32 0.39
<b>NOISE REDUCTION</b>	α <sub>w</sub> : 0.20
EN ISO 354	
<b>PERMANENT ANTISTATIC</b>	≤ 2 kV
ISO 6356	
<b>TRANSVERSAL RESISTANCE</b>	≤ 1 X 10 <sup>9</sup> Ohm
ISO 10965	
<b>THERMAL RESISTANCE</b>	0.082 m <sup>2</sup> K/W
ISO 8302	
<b>COLOUR FASTNESS TO LIGHT</b>	≥ 7
EN ISO 105-B02	
<b>COLOUR FASTNESS TO WATER</b>	≥ 4
EN ISO 105-E01	
<b>RUBBING FASTNESS</b>	≥ 4
EN ISO 105-X12	
<b>GUT N° PRODIS</b>	343D0EEE





Part of **betap**<sup>®</sup>

[www.bloq.nl](http://www.bloq.nl)